



SMART CARD ACCESS

The KL1050 is a simple, smart card KitLock providing codeless access to lockers, cabinets, cupboards and enclosures.

The KL1050 KitLock offers functions for single users (Private Function) and short-term use by multiple users (Public Function). The KL1050 is easy to fit to replace an existing cam lock, or fit to a new locker or cabinet that does not have an existing locking device. The lock will perform up to 15,000 openings on just two AAA batteries.

Go Keyless. Go **KitLock**.

FEATURES

- MIFARE™ compatible
- Master User Card
- Technician Card
- Private Function
- Public Function
- Public Pairing Feature*
- Easy to fit and program
- Up to 15,000 operations from 2 x AAA batteries
- Battery Override
- Any orientation
- IP55 rated when fitted with gasket
- All parts / fixings / templates included

KL1050

Go Keyless. Go **KitLock**.

Master User Card

A single Master User Card can be registered.

Technician Card

A single Technician Card can be registered. Technician Cards are only used in Public Function.

Private Function

This is intended for use where there is a single user. Up to 50 individual MIFARE™ cards can be registered on the lock and only those registered cards can continue to unlock that lock. The Master User Card is used to open a lock, register a new User Card and remove a User Card. The Technician Card is not available in this function.

Dedicated and existing MIFARE™ cards can be used, no need to purchase new smart cards.

Public Function

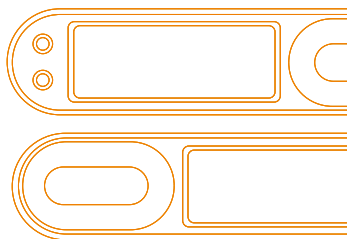
Suitable for short-term use by different users. Touch a MIFARE™ smart card to lock the lock and then use the same card to unlock the lock, leaving the lock in that unlocked state for any other compatible card to be used. Pre-registration of the card is not required and any new or existing MIFARE™ card, fob or wristband can be used. Suitable for use in short-term multi-occupancy applications such as leisure centres, spas and hotels.

The **Master User Card** is used to open the lock and delete the currently in-use User Card. The lock will return to an unlocked state.

The **Technician Card** is used to open the lock and retain the currently in-use User Card. The lock will return to a locked state.

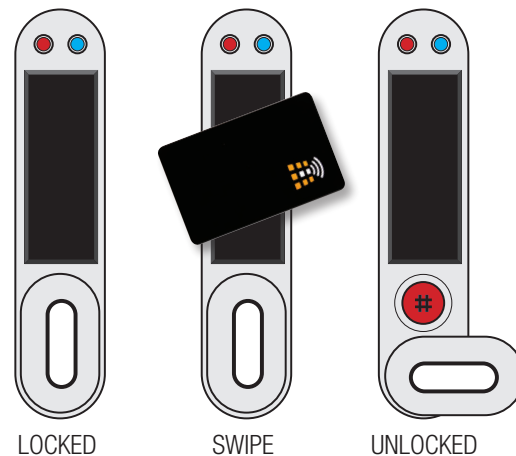
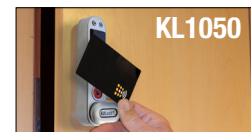
The **Public Pairing Feature** prevents the same card from locking multiple locks that are operating in Public Function.

*Public Pairing Feature is supported with MIFARE™ classic smart cards.



Easy access using smart card technology.

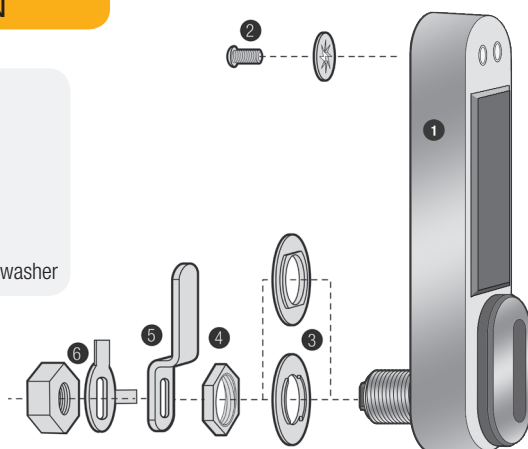
Smart card provides codeless and keyless access.



EASY INSTALLATION

- 1 KitLock
- 2 Upper fixing bolts
- 3 Packer pieces x 2
- 4 Locking nut
- 5 Cams x 2
- 6 Cam fixing nut and locking washer

Batteries – 2 x 1.5V AAA
 Template x 1
 MIFARE™ cards x 2



TECHNICAL SPECIFICATIONS

Operations	Up to 15,000 openings
Batteries	2 x 1.5 AAA cells (supplied)
Low Battery Warning	Red LED will flash on opening to indicate batteries need to be changed
Memory	Non-volatile memory will be retained
Battery Override	A 9 volt battery can be placed against external contacts
Material	Zinc Alloy
Functions	Private and Public
Door Thickness	Ready to fit doors up to 25mm (1")
Fitting	Easy to fit and program
Fitting Options	Any orientation
Finish	Silver grey
External Dimensions (to top of handle)	136mmL x 33mmW x 28mmD (5 ³ / ₈ " x 1 ⁵ / ₁₆ " x 1 ¹ / ₈ ")
IP code	IP55 rated (when used with gasket)

*Codelocks and KitLocks electronic locks offer a two year warranty and will be repaired, serviced or replaced free of charge if they develop a manufacturing fault. Faults caused by misuse, abuse and/or poor fitting are not covered by the warranty.